

# imagine

Technology Pvt. Ltd.

## CONTACT US

Kupondole, Lalitpur, Nepal  
01-5541978 , 01-5541978  
info@imagineit.com.np  
www.imagineit.com.np

# IMAGINE TECHNOLOGY PVT. LTD

Information networks and Security systems have emerged as strategic assets and a critical element for delivering services. Today's information networks must meet increasing demands to carry more information and provide new services. Leading organizations are adopting newer applications for information dissemination. These requirements form the driving forces for network infrastructure and technology decisions.

Imagine Technology is an organization dealing with various Infrastructures, Data Centers, Security & Technology solutions within and outside of Nepal. We are one of the leading Data Centre and Security business solution provider in retail and corporate area. We have been playing major role in spreading the technological and security system importance and assurance in Nepal. Imagine Technology has partnered with international leaders to assure the ICT products standard in Nepal. We have been providing the security products and technological information for business continuity to various organizations ranging from SMB to enterprise level.

Incorporated in 2008, Imagine Technology has grown to become one of the most competent organizations in the technology services arena. We serve a variety of market sectors and industries with offerings that range from essential security systems intended to reduce security vulnerability to life and property and IT infrastructure design to project management of complex IT initiatives, from communications to power, from enterprise level software to web solutions.

# CAPABILITIES

---

Security and Safety

Rised Access Flooring System

Power Solution

Fire Resistant Door

Data Center Infrastructure Management

Automatic Fire Supression System

Data Center Planning, Design ,Designing,  
Building, Maintenance

Very Sensitive Detection System

Infrastructure Cooling System

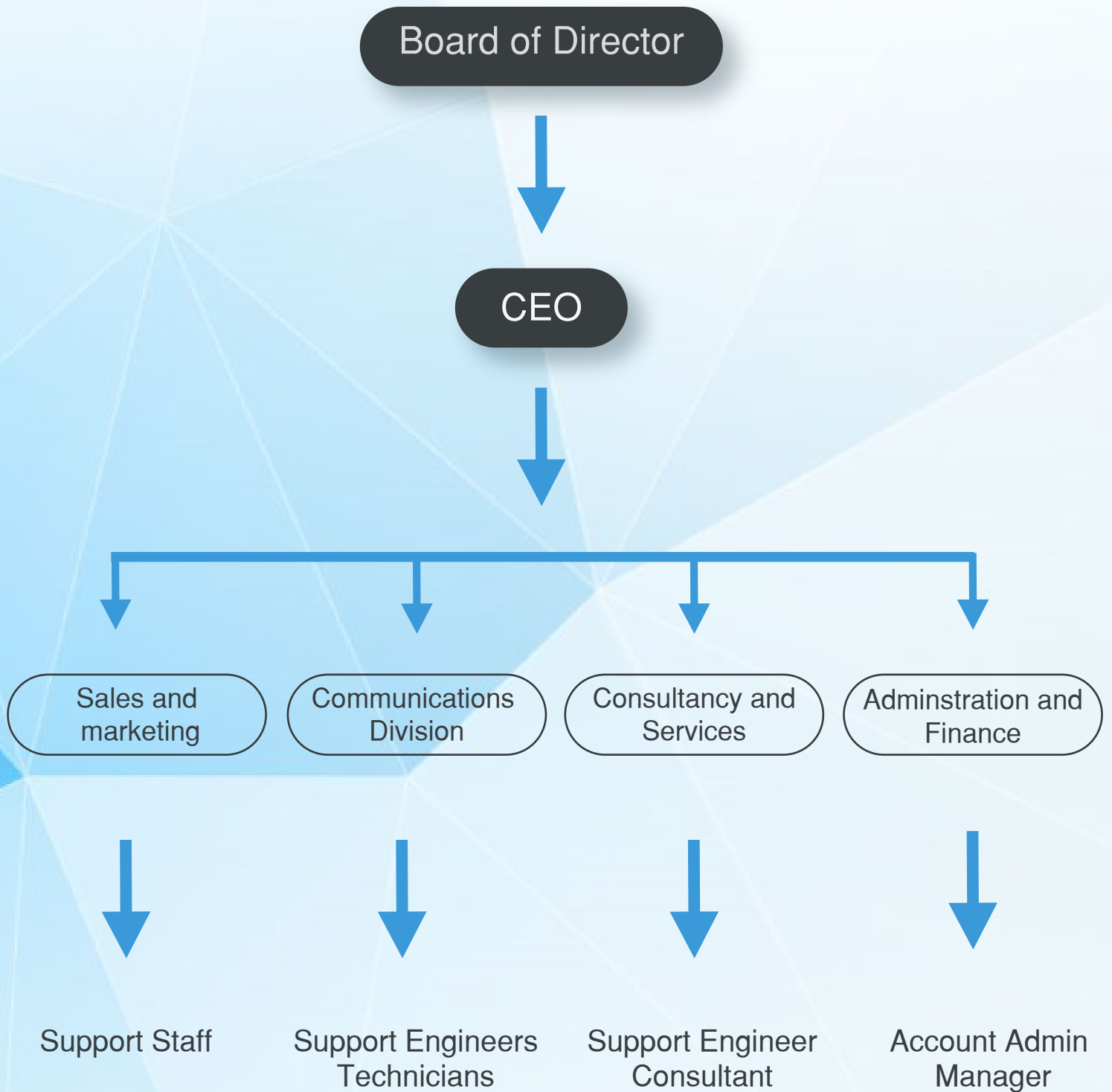
HVAC Designing System

Environmental Monitoring System  
with Remote Monitoring

Redundant Power Supply with  
Remote Monitoring

# FUNCTIONAL FLOW CHART

---








# OUR TECHNOLOGY PARTNERS

---

## INFRASTRUCTURE SOLUTION

Major Brands	Products
 <p><b>UNITILE</b> Raised Access Floor Systems</p>	Raised Access Flooring System
 <p><b>Schneider</b> Electric</p>	Data Center Solution, Power Products, Automation & Control Solutions




## NETWORK & COMMUNICATION

Major Brands	Products
 <p><b>CISCO</b> PARTNER Select Certified</p>	Routers, Switches, Firewalls, IP Communications



## SECURITY & SAFETY

Major Brands	Products
 <p><b>ZKSoftware</b> Advanced Biometric and RFID Solutions</p>	Fingerprint / Biometric Attendance System
 <p><b>Kidde</b></p>	Automatic FIRE Supression System
 <p><b>xtralis</b></p>	Very Early Smoke Detection System
 <p><b>HÖRMANN</b></p>	Shakti Hormann Fire Doors
 <p><b>RLE</b> Technologies</p>	Detection of Water Leak, Environment Monitor
 <p><b>MASER</b></p>	Rodent Repellent System

## POWER PRODUCTS

Major Brands	Products
	UPS, Battery, Power & Safety
	Data Centre, UPS, Battery, Power
	Gasoline and Diesel Generator (1 KVA to 100 KVA)

## SOFTWARE

Major Brands	Products
	Network Management Software Solution
	Data Centre Infrastructure Management

## SISTER CONCERN

Major Brands	Products
 <p>The logo for Nexus World Australia features the word "nexus" in a blue, lowercase, sans-serif font. Below it, the word "WORLD" is written in a smaller, blue, uppercase font. Underneath "WORLD", the word "Australia" is written in a blue, lowercase font. A red and orange graphic element resembling a stylized signal or waveform is positioned between "nexus" and "WORLD".</p>	System Integrator
 <p>The logo for Nexus Fire &amp; Security Ltd features the word "NEXUS" in a large, bold, red, uppercase font. Below it, the words "Fire &amp; Security Ltd" are written in a smaller, bold, black, uppercase font.</p>	Electronic Fire and Security Solutions
 <p>The logo for Synergy Tech Pvt. Ltd features the word "Synergy" in a large, bold, green, lowercase font. Below it, the words "Tech Pvt. Ltd" are written in a smaller, green, lowercase font, flanked by two horizontal lines.</p>	Distributor for Schneider Electric in Nepal Datacenter Elite partner

# MAJOR CLIENTS

---

## Data Center (Servers, Network & Security, Power, ATS, Fire & Power Distribution Solution)

- Karja Suchana Kendra Limited, Heritage Plaza, Kathmandu
- Nepal Clearing House Ltd. (Kamaladi, Kathmandu)
- Himalayan Bank Limited (Kamaladi, Kathmandu)
- Sanima Bank Limited (Naxal, Kathmandu)
- Ace Development Bank Limited (Naxal, Kathmandu)
- Ncell Pvt. Ltd. (Jawalakhel, Lalitpur)
- Govt. of Nepal – FMCGO (Singadurbar, Kathmandu)
- Butwal Power Co. Ltd. (Buddhanagar, Kathmandu)
- NIC Asia Bank Limited (Thapathali, Kathmandu)
- Govt. of Nepal - Social Security Fund (Singadurbar, Kathmandu)
- Company Registrar Office (Tripureshwor, Kathmandu)
- National ID Card Project
- Nepal SBI Bank Ltd.
- Citizens Bank Ltd.
- Everest Bank Ltd.

## Fire, Surveillance & Security Solution

- Institute of Engineering, Center for Information Technology (Pulchowk Campus)
- Sanima Bank Limited (Naxal, Kathmandu)
- Govt. Of Nepal - Inland Revenue Department
- GIZ (Sanepa, Lalitpur)
- Standard Chartered Bank Nepal Ltd. (New Baneshwor)

## **Power Solution (UPS, ATS/PDU, Backup & Stabilizer)**

- Credit Information Bueurue, Kathmandu
- Kathmandu Upatyaka Khanepani Limited
- Reliable Finance Ltd. (Head Office & Branches)
- Manjushree Finance Ltd. (Head Office & Branches)
- Nepal Clearing House Limited
- Karmacharya Sanchaya Kosh Limited (Head Office)
- Sanima Bank Ltd. (Head Office)